

Badia Exporttools 3.0 for Adobe InDesign CS4 User Guide

Copyright ©2002-2009 Badia Software, a division of Riodia Enterprises, Inc. All Rights Reserved.

System Requirements

- Adobe InDesign CS4
- Mac OS X Tiger (10.4.2 or later), or Leopard (10.5.x)

How to Install, Update or Uninstall

Double-click the **Exporttools for ID Installer** icon and follow the on-screen instructions. You can use the same installer to install for the first time, update to a new version, or uninstall the software.

By installing Badia Exporttools, you agree to the Terms and Conditions listed in the License Agreement document.

30-Day Trial Period and Activation

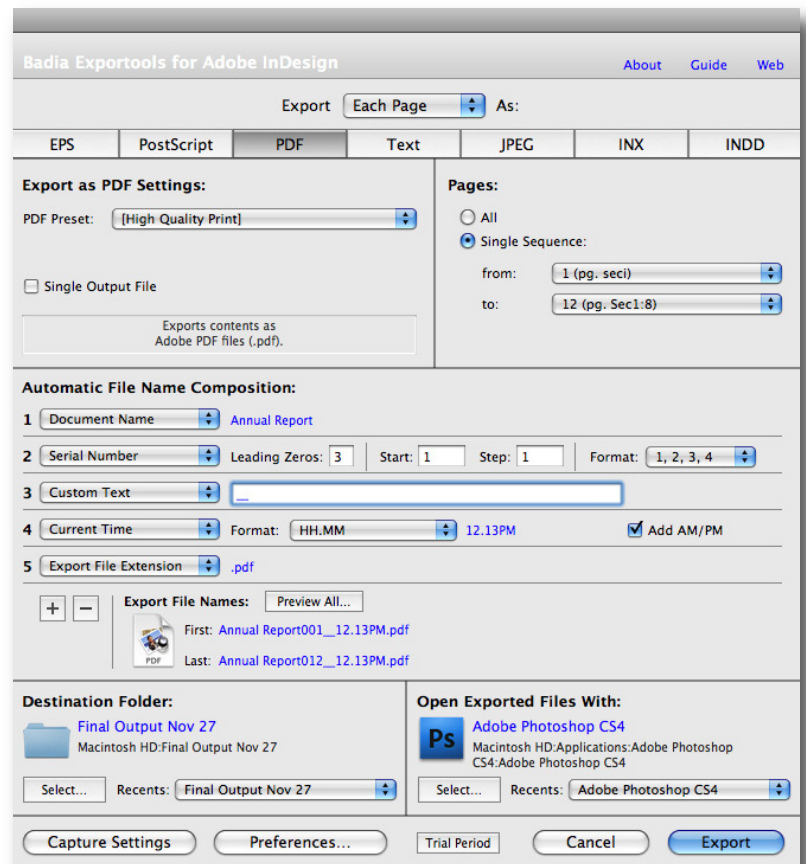
Exporttools will run in trial mode when it's first installed. You have 30 days to test-drive this product without activating it. To activate and unlock the usage restrictions, click the **"About"** link and then the **"Activate Now"** button. Simply follow the instructions shown on screen to complete the activation process. The number of licenses that you purchase determine the exact number of computers that you are allowed to activate this software.

User Guide

Badia Exporttools lets you automate the process of exporting document pages, spreads and selections as individual files in several formats: EPS, PostScript, PDF, Text, JPEG, INX or INDD.

You can choose which pages or spreads to export, the rules governing the file names, and, if you wish, which program to open the new files in.

To use Exporttools, select **File -> Badia Exporttools** from the InDesign CS4 menu.



Export Type

Use the **Export** pop-up menu to select the export type: **Each Page**, **Each Spread** or **Selection**. For any of these options, you can then select the export format (EPS, PS, PDF, TXT, JPEG, INX or INDD).

Exporting as EPS

To export pages as EPS, choose the desired **Color** and **Preview** EPS options, or click on the **Advanced Settings** buttons for more options. These options are the same as when you choose Export → Format: EPS from the InDesign File menu.

Exporting as PostScript or PDF

To export as PostScript or PDF, select a print/pdf preset from the list of available presets for each format. All the settings saved with the chosen preset will be used when exporting.

- **Single Output File:** Select to save the pages/spreads in one single output file (instead of individual files, which is the Exporttools default). Not available when exporting selections.

Exporting as Text

Allows you to extract all the text located in text frames and save it to disk.

- **Frame Order:** Determines the frame order in which text will be extracted from each page, spread or selection. The top-left corner of the text frame is used to establish this frame sequence. For example, **Left to Right, Top Down** will scan frames starting at the top of the page and going toward the bottom; if two frames share the same Y coordinate, then the order goes from left to right.
- **Text Format:** Select the text format: Plain Text, Rich Text Format, or InDesign Tagged Text.
- **Single Output File:** Select to save all the selected pages/spreads as a single text file.
- **Use Page Label Separators:** When this option is selected, Exporttools will add the separator line “*** Page/Spread # ***” between pages/spreads when saving text as a single output file.

Exporting as JPEG

Allows you to export JPEG pictures of each page, spread or selection to file. Select the desired **JPEG Quality** and **Resolution**.

Exporting as INX (InDesign Interchange)

Allows you to export as INX format. You can open these files in Adobe InDesign CS3 or CS4. *Note:* Exporting in this format may result in some page items to change their position on the exported page/spread, especially when the items cross the spread or touch the pasteboard area.

Exporting as INDD (InDesign Documents)

Allows you to export pages, spreads or selections as InDesign documents. Options: **InDesign Document/InDesign Template**.

Note: Exporting in this format may result in some page items to change their position on the exported page/spread, especially when the items cross the spread or touch the pasteboard area.

Pages/Spreads Area

When exporting pages or spreads, you can choose the page/spread range:

- **All:** All pages/spreads in the document.
- **Single Sequence:** A single page/spreads sequence. Use the pop-up menus to select the “from” and “to” pages/spreads (section page numbers, if used, will be shown in brackets). When exporting as spreads, the numbers shown in the pop-ups indicate absolute spread numbers, and the actual pages in each spread are shown in brackets.

Exporting Selections

To export a selection, first select the item or group of items in the document with the Selection Tool. Then, choose **Selection** in the **Export** type pop-up menu of Exporttools. A preview of the selection is shown. Options:

- **Bleed:** This is an additional margin that will be added around the selection boundaries. Default is 0 pt.

Exporttools will save the selection in a file whose dimensions are the same as the boundary box of the selected items plus the amount of bleed.

Note: When exporting selections, some document settings and preferences (such as text wrap) may not be retained due to the fact that the interaction between the selected items and the other page elements no longer exists.

File Name Components

To compose the final file names, choose from any of the 9 file name components. Use the “+” and “-” button to add or remove components. For each component you can choose: Document Name, Page or Spread Sequence, Section Page Number, Serial Number, Today’s Date, Current Time, User Name, Destination Folder Name, Export File Extension, or Custom Text.

Exporttools will show the first and last file names, as well as the icon of the exported file. You can also press the “**Preview All**” button to preview the exact full list of exported file names.

Note: The total file name length cannot exceed 63 characters.

- **Leading zeros** (*page sequence, page section and serial numbers only*): You can add leading zeros to complete a certain number of digits. For example, if you use 4 digits and the page number is 2, Exporttools will add 3 zeros before the page number (i.e. 0002).
- **Serial Start, Step, Format** (*serial numbers only*): You can specify start value, step value and format (numbers, all cap letters or small cap letters).

Destination Folder

Select here the destination folder where files will be exported. Click the **Select** button to choose a folder. The destination folder path and folder icon are also shown. You must specify a destination folder before pages are exported. The **Recents** popup contains a list of the recent 50 folders, plus these folders: The **Document Container** folder, which is the folder that contains the document currently open, and the **Desktop** folder.

Open Exported Files With

Allows you to open the exported files with the default application or any application you choose. Click the **Select** button to choose an application. The **Recents** popup contains the last 50 applications you’ve used, plus the Default Application entry, which is the default application that the Finder assigns to the exported files (same effect as double-clicking the files in the Finder).

Preferences

Click the **Preferences** button to select the following options:

- **Duplicate Files:** Select what action to take when files with the same name already exist in the destination folder: **Replace** will automatically delete the old one; **Skip** will leave the existing file untouched; **Ask What To Do** will display a warning every time a duplicate file is found allowing you to decide what to do.
- **Restart Serials In Each Session:** When this option is on, the serial numbers will be reset to the **Start** value after exporting the files. Otherwise, the serial numbers will automatically increase with each export session.
- **Show Export Log:** When this option is selected, Exporttools will show a window log detailing the export progress. Otherwise, a simple progress window is shown.

Preferences File

Exporttools creates a preferences file to store the last settings used. This file is saved at this location: **/<User Name>/Library/Preferences/BadiaSoftware/Badia Exporttools 3.0 for ID Prefs**). Removing this file will revert all settings to the factory defaults.

Badia Exporttools™ 3.0 for Adobe InDesign CS4

Copyright ©2002-2009 Badia Software, a division of Riodia Enterprises, Inc. All Rights Reserved.

Liability. The information in this guide and the computer software are distributed on an "As Is" basis, without warranties or guaranties of any kind. While every precaution has been taken, Badia Software shall have no liability to any person or entity with respect to any loss or damage caused or alleged to be caused directly or indirectly by the instructions contained in this book or by the computer software described in it. See the License Agreement file for a complete description of the Terms and Conditions.

Trademarks. Exporttools is a trademark of Riodia Enterprises, Inc. InDesign is a trademark of Adobe Systems Incorporated. All other trademarks are the properties of their respective owners.