

## Badia Exporttools 2.0x for Adobe InDesign CS3 User Guide

Copyright ©2002-2008 Badia Software, a division of Riodia Enterprises, Inc. All Rights Reserved.

### System Requirements

- Adobe InDesign CS3
- Intel or PowerPC computer
- Mac OS X Tiger (10.4.2 or later), or Leopard (10.5.x)

### How to Install, Update or Uninstall

Double-click the **Exporttools for ID Installer** icon and follow the on-screen instructions. You can use the same installer to install for the first time, update to a new version, or uninstall the software.

By installing Badia Exporttools, you agree to the Terms and Conditions listed in the License Agreement document.

### How to Register

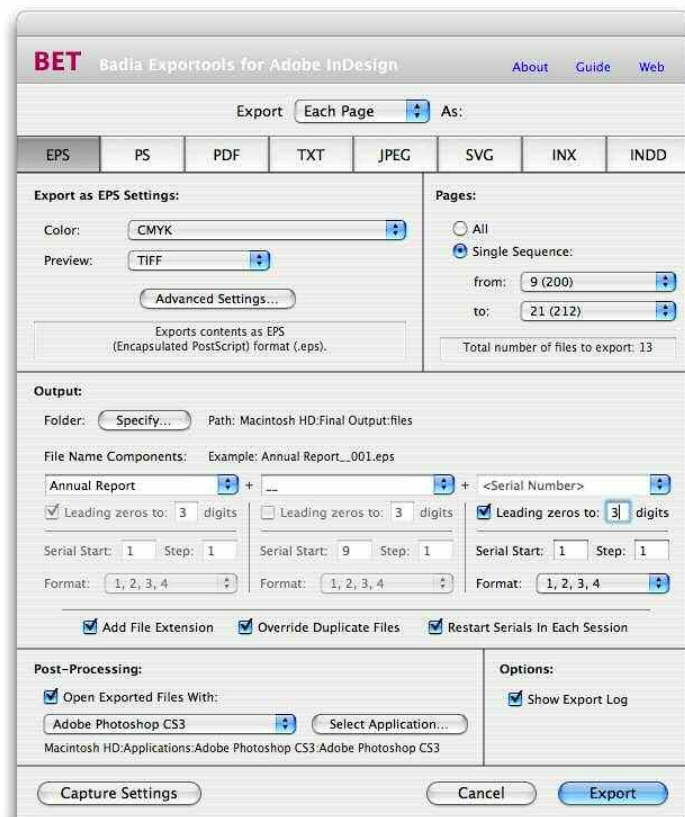
Badia Exporttools will run in demonstration (demo) mode when it's first installed. This means that certain features are not available or are limited to a certain time or usage. After a certain period of time, the demo will expire. To register and remove the demo restrictions, click on the **“About”** link and then the **“Register Now”** button. Simply follow the instructions shown on screen to complete the registration process and convert the demo version into a full-working version. The number of licenses that you purchase determines the exact number of computers that you are allowed to register this software.

### User Guide

Badia Exporttools lets you automate the process of exporting document pages, spreads and selections as individual files in several formats: EPS, PostScript, PDF, Text, JPEG, SVG, INX or INDD.

You can choose which pages or spreads to export, the rules governing the file names, and, if you wish, which program to open the new files in.

To use Exporttools, select **File → Badia Exporttools** from the InDesign CS3 menu.



## Export Type

Use the **Export** pop-up menu to select the export type: **Each Page**, **Each Spread** or **Selection**. For any of these options, you can then select the export format (EPS, PS, PDF, TXT, JPEG, SVG, INX or INDD).

## Exporting as EPS

To export pages as EPS, choose the desired **Color** and **Preview** EPS options, or click on the **Advanced Settings** buttons for more options. These options are the same as when you choose Export → Format: EPS from the InDesign File menu.

## Exporting as PostScript or PDF

To export as PostScript or PDF, select a print/pdf preset from the list of available presets for each format. All the settings saved with the chosen preset will be used when exporting.

- **Single Output File:** Select to save the pages/spreads in one single output file (instead of individual files, which is the Exporttools default).

## Exporting as Text

Allows you to extract all the text located in text frames and save it to disk.

- **Frame Order:** Determines the frame order in which text will be extracted from each page, spread or selection. The top-left corner of the text frame is used to establish this frame sequence. For example, **Left to Right, Top Down** will scan frames starting at the top of the page and going toward the bottom; if two frames share the same Y coordinate, then the order goes from left to right.
- **Text Format:** Select the text format: Plain Text, Rich Text Format, or InDesign Tagged Text.
- **Single Output File:** Select to save all the selected pages/spreads as a single text file.
- **Use Page Label Separators:** When this option is selected, Exporttools will add the separator line “\*\*\* Page/Spread # \*\*\*” between pages/spreads when saving text as a single output file.

## Exporting as JPEG

Allows you to export JPEG pictures of each page, spread or selection to file. Select the desired **JPEG Quality** and **Resolution**.

## Exporting as SVG

Allows you to export as SVG (Scalable Vector Graphics) format. Options: **SVG/SVG Compressed**, **Link/Embed Images**.

## Exporting as INX (InDesign Interchange)

Allows you to export as INX format. You can open these files in Adobe InDesign CS2 or CS3. *Note:* Exporting in this format may result in some page items to change their position on the exported page/spread, especially when the items cross the spread or touch the pasteboard area.

*Note:* Exporting in this format may result in some page items to change their position on the exported page/spread, especially when the items cross the spread or touch the pasteboard area.

## Exporting as INDD (InDesign Documents)

Allows you to export pages, spreads or selections as InDesign documents. Options: **InDesign Document/InDesign Template**.

*Note:* Exporting in this format may result in some page items to change their position on the exported page/spread, especially when the items cross the spread or touch the pasteboard area.

## Pages/Spreads Area

When exporting pages or spreads, you can choose the page/spread range:

- **All:** All pages/spreads in the document.
- **Single Sequence:** A single page/spreads sequence. Use the pop-up menus to select the “from” and “to” pages/spreads (section page numbers, if used, will be shown in brackets). When exporting as spreads, the numbers shown in the pop-ups indicate absolute spread numbers, and the actual pages in each spread are shown in brackets.

## Exporting Selections

To export a selection, first select the item or group of items in the document with the Selection Tool. Then, choose **Selection** in the **Export** type pop-up menu of Exporttools. A preview of the selection is shown. Options:

- **Bleed:** This is an additional margin that will be added around the selection boundaries. Default is 0 pt.

Exporttools will save the selection in a file whose dimensions are the same as the boundary box of the selected items plus the amount of bleed.

*Note:* When exporting selections, some document settings and preferences (such as text wrap) may not be retained due to the fact that the interaction between the selected items and the other page elements no longer exists.

## Output Area

Allows you to select the destination folder and the rules for composing the file names.

- **Specify Button:** Click here to choose a destination folder where files will be exported and saved. The destination folder path is shown in small type. You must specify a destination folder before exporting.
- **File Name Components:** Allows you to define how the exported files will be named. An example of a file name is shown in small type. To build the file names, use a combination of the 3 name component fields. For each component you can choose: Document Name, Page or Spread Sequence Number, Section Page Number, Serial Number, Custom Text.

Each name component has in addition the following options for numeric variables (page, section or serial numbers):

- **Leading zeros to \_\_ digits:** You can add leading zeros to complete a certain number of digits. For example, if you use 4 digits and the page number is 2, Exporttools will add 3 zeros before the page number (i.e. 0002).
- **Serial Start, Step, Format** (*serial numbers only*): For serial numbers, you can specify start value, step value and format (numbers, all cap letters or small cap letters).

*Note:* The total file name length cannot exceed 63 characters.

- **Add File Extension:** Select to add the file type extension to the end of the file name (for example, “.eps”).
- **Override Duplicate Files:** Check to automatically replace any file inside the destination folder that has the same name as the new one being generated. If this option is turned off, Exporttools will display a warning every time a duplicate file is found with the option to skip it or replace it.
- **Restart Serials In Each Session:** When this option is on, the serial numbers will be reset to the **Start** value after exporting the files. Otherwise, the serial numbers will increase with each export session.

## Post-Processing Area

Allows you to open the exported files with the default application or application you choose.

- **Open Exported Files With:** Click to turn this option on and off.
- **Pop-Up with List of Post-Processing Applications:** Select <Default Application> or any application from this list, or click the “Select Application” button to add one. Exportools saves the last 50 applications you’ve used, so you can switch back and forth between them. If <Default Application> is chosen, the exported files will be open with the default application that the Finder assigns to the files (same effect as double-clicking the files in the Finder).
- **Select Application:** Click here to select an application and add it to the list.

## Options Area

- **Show Export Log:** When this option is selected, Exportools will show a window log detailing the export progress. Otherwise, a simple progress window is shown.

## Export Log

The export log window contains detailed information of the export process. It reports in real time which files are being exported, and any errors or warnings that may occur during the process. You can cancel the export process by clicking the **Cancel** button (or typing **Command-Period**).

Once the export is finished, these buttons are available:

- **Open Folder:** Click to reveal the destination folder in the Finder.
- **Reopen Exportools:** Click to close the export log window and return to the Exportools main window.
- **Open Exported Files:** This button is only available if the **Open Exported Files With** check button in the Post-Processing area of Exportools was previously selected. Click to close the export log window and open the exported files with the selected post-processing application.

## Preferences File

Exportools creates a preferences file to store the last settings used. This file is saved at this location: `/<User Name>/Library/Preferences/BadiaSoftware/Badia Exportools 2.0 for ID Prefs`). Removing this file will revert all settings to the factory defaults.

---

### Badia Exportools™ 2.0 for Adobe InDesign CS3

Copyright ©2002-2008 Badia Software, a division of Riodia Enterprises, Inc. All Rights Reserved.

**Liability.** The information in this guide and the computer software are distributed on an “As Is” basis, without warranties or guarantees of any kind. While every precaution has been taken, Badia Software shall have no liability to any person or entity with respect to any loss or damage caused or alleged to be caused directly or indirectly by the instructions contained in this book or by the computer software described in it. See the License Agreement file for a complete description of the Terms and Conditions.

**Trademarks.** Exportools is a trademark of Riodia Enterprises, Inc. InDesign is a trademark of Adobe Systems Incorporated. All other trademarks are the properties of their respective owners.